

Bungalow Range

The Aughton - Type B

3 Bedroom Dormer Bungalow

Overall dimensions (not incl. conservatory & garage)

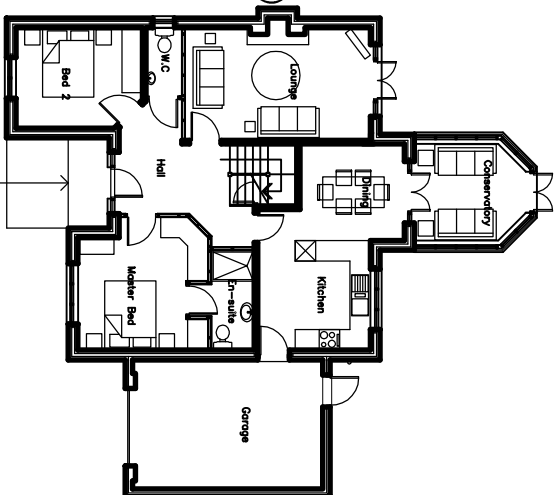
10.0m wide x 11.9m deep (32' 10" x 39' 1")

Overall footprint size

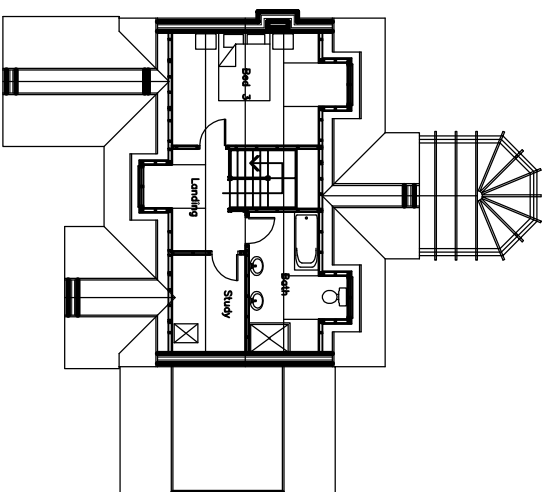
14.0m wide x 15.5m deep (45' 11" x 50' 10")

Total floor area

138m² (1490 sq. ft)



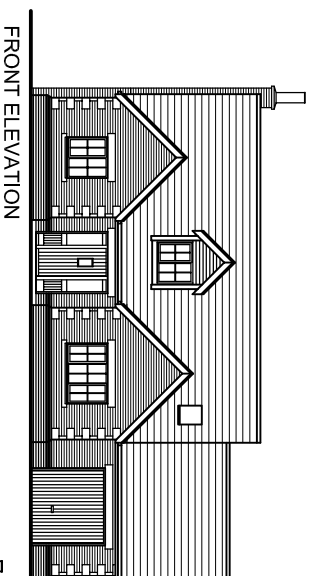
GROUND FLOOR PLAN



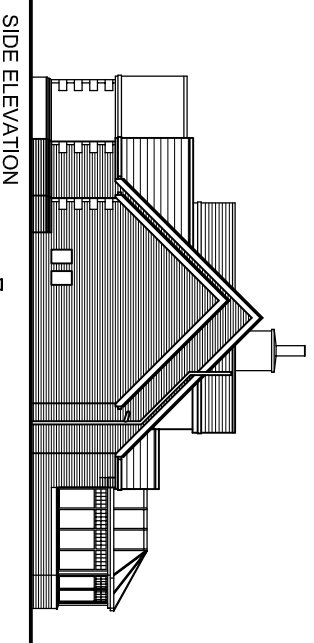
FIRST FLOOR PLAN

Dimensions (in metres)

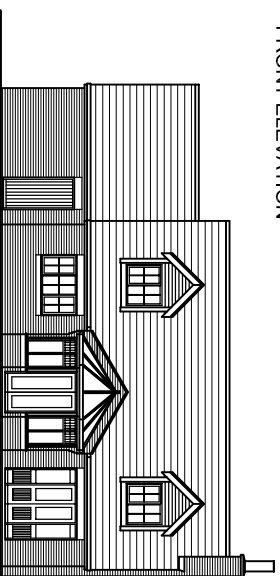
Ground Floor	
Conservatory	2.8 x 3.3
Lounge	3.3 x 5.4
Kitchen Dining	6.1 x 4.3
WC	2.0 x 1.0
Hall	3.0 x 3.9
Bedroom 2	3.0 x 3.7
Master Bedroom	3.9 x 3.8
En-suite	2.9 x 1.3
First Floor	
Bedroom 3	3.4 x 4.3
Landing	3.0 x 2.2
Family Bathroom	4.2 x 2.1
Study	2.9 x 2.1



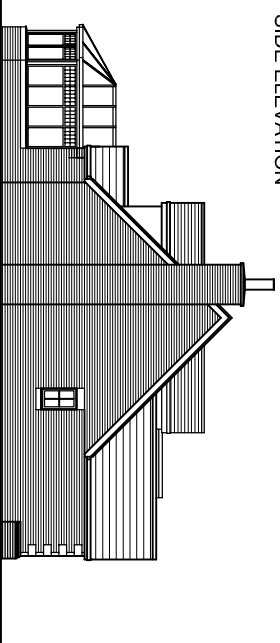
FRONT ELEVATION



SIDE ELEVATION



REAR ELEVATION



SIDE ELEVATION