

Traditional Range

The Heath A

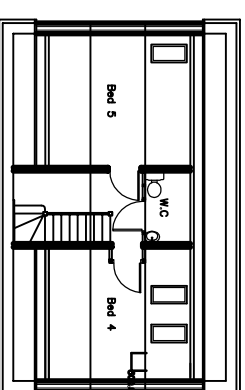
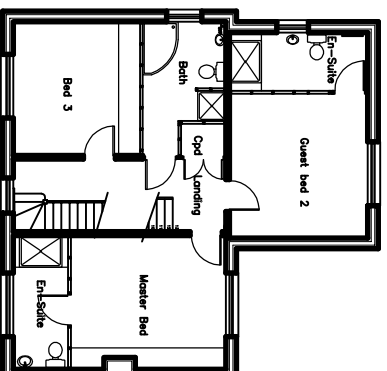
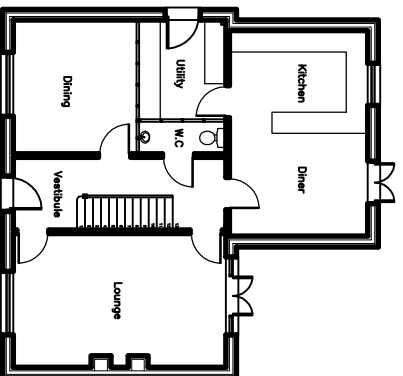
5 Bedroom Traditional Style

Overall footprint size

10.4m wide x 10.6m deep (34' 2" x 34' 10")

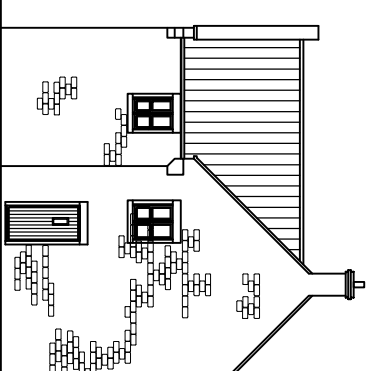
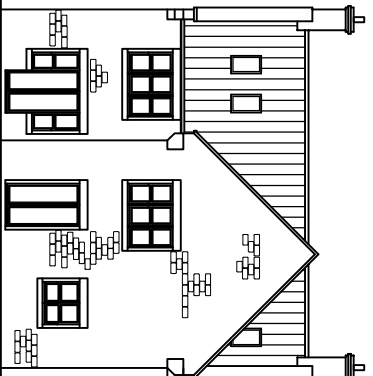
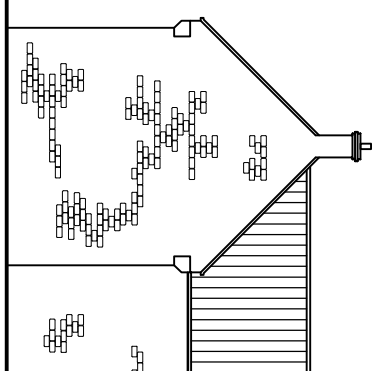
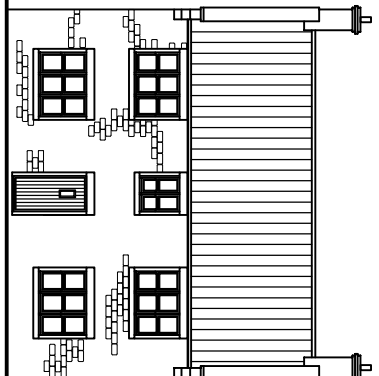
Total floor area

205m² (2200 sq. ft)



Dimensions (in metres)

Ground Floor	
Kitchen Diner	5.8 x 3.9
Utility	2.8 x 2.5
WC	0.9 x 2.5
Dining	3.8 x 3.5
Vestibule	2.1 x 6.0
Lounge	3.8 x 6.0



First Floor	
Master Bedroom	3.8 x 4.4
En-suite	3.8 x 1.6
Guest Bedroom 2	4.1 x 3.9
En-suite	1.6 x 3.9
Bedroom 3	3.8 x 3.6
Family Bathroom	3.8 x 2.4
Landing	2.1 x 6.0

Second Floor	
Bedroom 4	3.8 x 4.0
Bedroom 5	3.8 x 4.0
WC	2.1 x 1.3
Landing	2.1 x 3.6