

# Traditional Range

## The Heath D

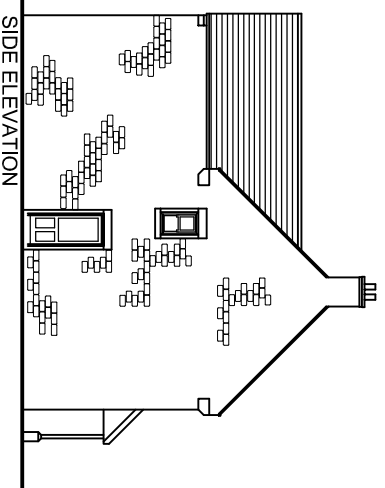
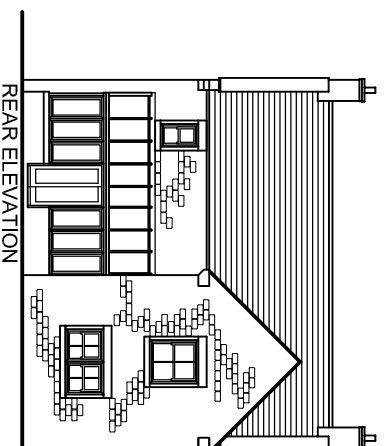
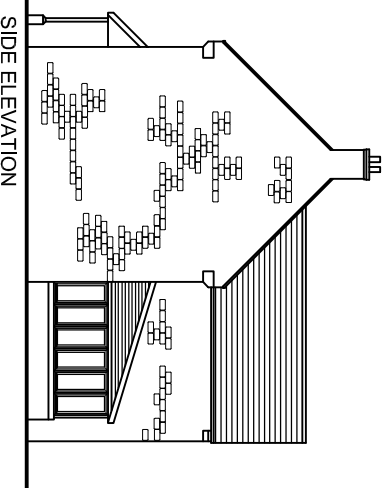
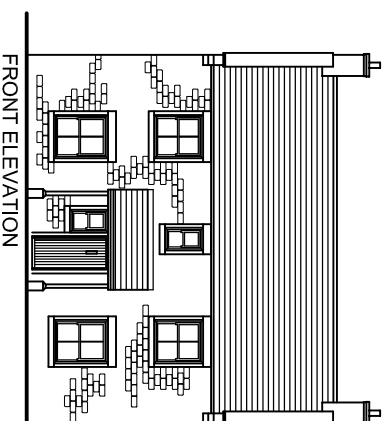
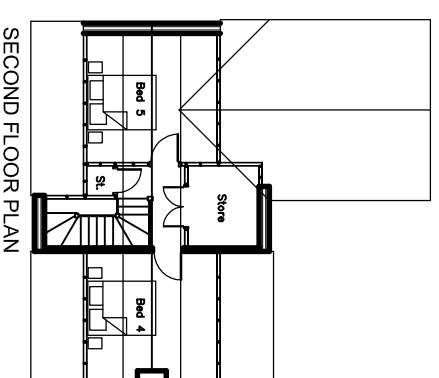
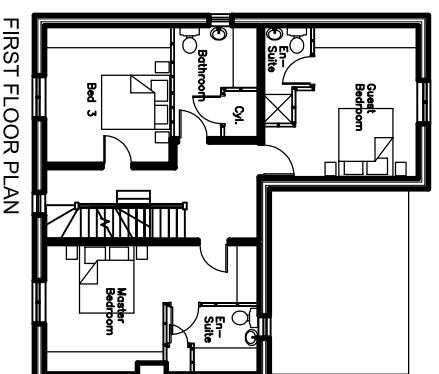
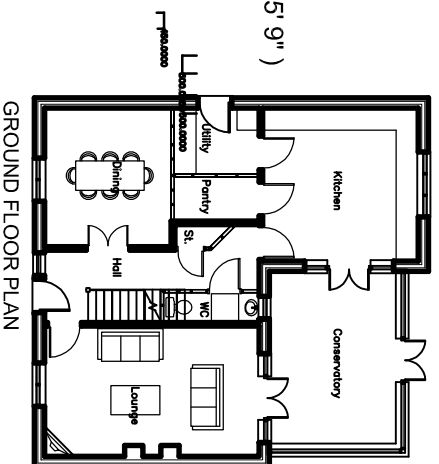
### 5 Bedroom Traditional Style

Overall footprint size

10.2m wide x 10.9m deep ( 33' 6" x 35' 9" )

Total floor area

205m<sup>2</sup> ( 2200 sq. ft )



### Dimensions ( in metres )

<b>Ground Floor</b>	
Kitchen	4.2 x 4.3
Conservatory	4.8 x 3.5
Utility	1.8 x 2.4
Pantry	1.2 x 2.3
WC	3.8 x 3.5
Dining	2.0 x 5.9
Hallway	3.6 x 5.9
Lounge	
<b>First Floor</b>	
Guest Bedroom 2	4.2 x 4.3
En-suite	2.7 x 1.3
Family Bathroom	3.1 x 2.4
Bedroom 3	3.8 x 3.5
Master Bedroom	3.6 x 5.9
En-suite	1.9 x 2.5
<b>Second Floor</b>	
Bedroom 4	3.6 x 3.6
Bedroom 5	3.6 x 3.6
Store	2.3 x 2.0