

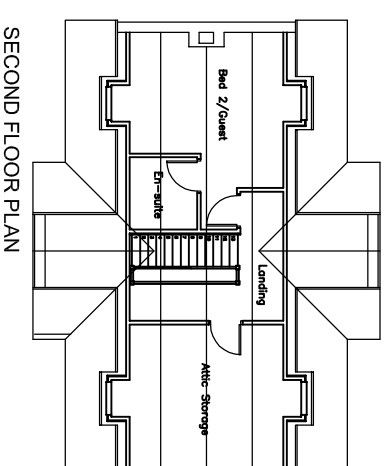
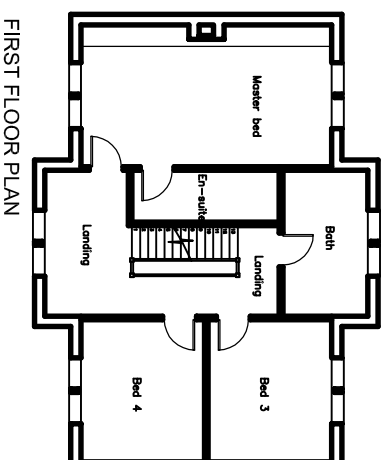
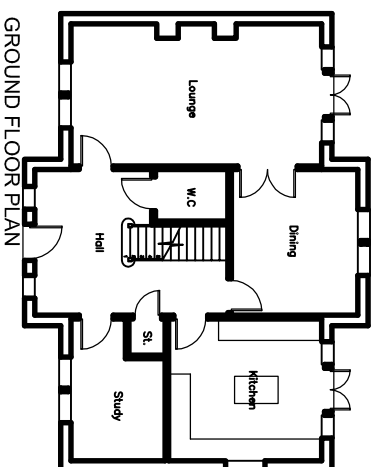
Traditional Range

The Bramall

4 Bedroom Detached

Overall footprint size
12.7m wide x 9.5m deep (41' 8" x 31' 2")

Total floor area
235m² (2530 sq. ft)



Dimensions (in metres)

Ground Floor	
Lounge	3.9 x 6.9
Dining	4.0 x 3.5
Kitchen	3.9 x 4.2
Study	3.9 x 2.6
Hall	4.0 x 5.3
W/C	1.4 x 2.0

First Floor	
Master Bedroom	3.9 x 6.9
En-suite	1.4 x 4.0
Bathroom	4.0 x 2.4
Landing	4.0 x 6.5
Bedroom 3	3.9 x 3.4
Bedroom 4	3.9 x 3.4

Second Floor	
Bedroom 2 (Guest)	4.3 x 4.3
En-suite	2.1 x 1.9
Attic Storage	4.0 x 4.3

