

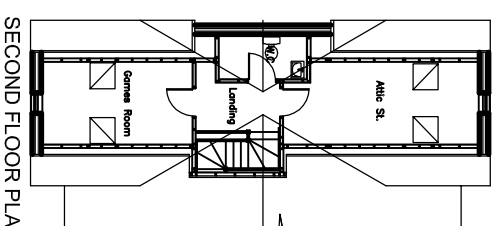
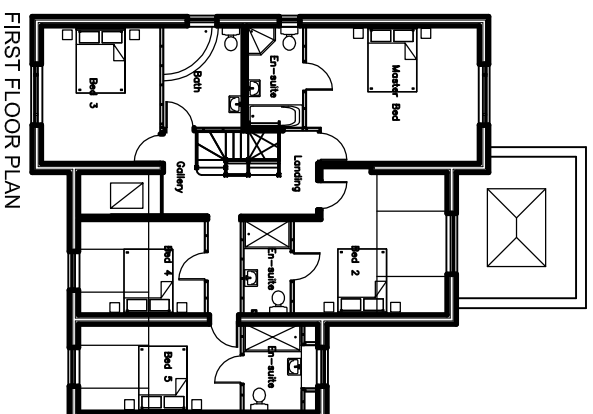
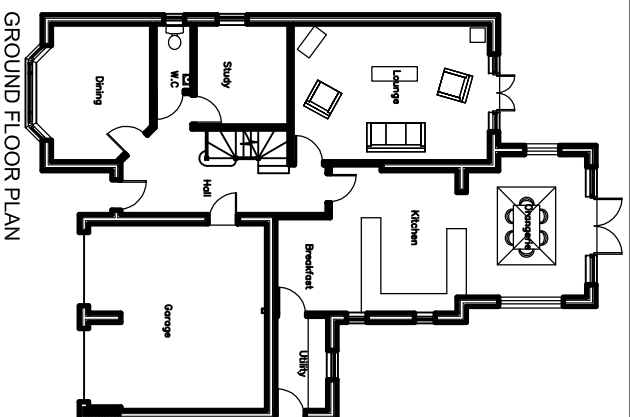
# Majestic Range

## The Frecheville

### 5 Bedroom Traditional Style

**Overall footprint size**  
12.5m wide x 17.1m deep ( 41' 0" x 56' 1" )

**Total floor area**  
285m<sup>2</sup> ( 3080 sq. ft )



### Dimensions ( in metres )

Room	Dimensions (m)
<b>Ground Floor</b>	
Lounge	4.3 x 6.1
Study	3.2 x 2.9
WC	2.1 x 1.2
Dining	4.3 x 3.1
Hall	2.6 x 6.4
Utility	2.9 x 1.6
Breakfast / Kitchen / Orangerie	4.4 x 9.6
<b>First Floor</b>	
Master Bedroom	4.3 x 5.4
En-suite	3.2 x 1.8
Bedroom 2	4.4 x 4.7
En-suite	3.0 x 1.5
Bedroom 3	4.3 x 3.7
Bathroom	3.2 x 2.5
Galleried Landing	2.7 x 4.8
Bedroom 4	3.0 x 3.9
Bedroom 5	2.7 x 5.0
En-suite	2.7 x 1.8
<b>Second Floor</b>	
Attic Store	2.6 x 6.1
WC	1.4 x 2.7
Games Room	2.6 x 4.7

